



# PREMIUM GRADE WELDING GLOVES

## 1080 FEATURES

- 14" length
- Cotton/foam lining
- Reinforced wing thumb
- Kevlar® stitching
- welted fingers
- Size - L

Also available in:

10800LL - Left hand only



1080  
BLUE

*Feature for Feature  
An Extraordinary Value*

869 Red



- Why Domestic Side Split Leather ?
- 100% USA made means USA hides and USA tanning.
- Highest most consistent standards
- Tighter thickness tolerances
- More uniformity in tanning process
- Greater strength, greater softness
- Longer lasting

## 24C FEATURES

- Made from premium pearl top grain kidskin
- Superior feel and dexterity
- Kevlar® sewn. Maximum stitches per inch for greater strength
- straight thumb for best gun grip

Available in:

24C-4" cuff  
24D-2" cuff

- Size - 24C - S, M, L, XL, 2XL  
24D - 2XS, S, M, XL



## 869 FEATURES

- Premium domestic side split cowhide
- Full 14" length
- Kevlar stitching resists heat and adds strength
- Cotton lined for maximum moisture absorption and best dexterity
- Wing thumb for best comfort and use
- Welted fingers protect stitching
- Size - L

Also available in:

810LL - Left hand only

## Deerskin Split

*Deerskin split leather gloves offer TIG welders the snugest and softest fit, result in the best and dexterity possible*

## 25, 25A, 25B FEATURES

- Made from pearl deerskin split leather
- Designed to maximize feel and dexterity while offering protection for TIG welders
- Kevlar® stitched with maximum stitches per inch for extra strength
- Straight thumb for best gun grip
- Three cuff lengths depending on preference (no cuff, 2", 4")
- Size - 25 - M, L  
25A, 25B - S, M, L, XL



25A  
2" cuff



25B  
4" cuff



25  
No cuff




## Aluminized

Aluminized gloves are designed to reflect higher heat temperatures and are available in a number of different configurations.

**820BHP FEATURES**

- Glove made from aluminized rayon and cowhide with wool lining for extreme reflective heat
- Includes replaceable aluminized Kevlar® / Weldflex® snap-on back-hand pad for high heat and heavy spatter protection
- 14" length
- Size - L
- 558 - Back-hand pad replacement

*Four layers of protection, great for Innershield*



**820BHP**

**992 FEATURES**

- Aluminized carbon Kevlar® back, Flextra® palm
- 14" length
- Double wool lined in palm
- Size - XL

Also available in:  
972 - with ACK back  
22 oz. PBI® palm



**992**

## Flextra®, Thermal Leather, PBI Temperature Range 400°F – 1000°F High Heat Selection Criteria

Selecting a high heat glove takes careful attention to the following. Please understand that applications may vary and no one material works best, and that heat will eventually penetrate the glove. All gloves and mitts are made XL so they can be thrown off when heat gets too great.

### When selecting a high heat glove, please determine the following:

- How hot is the item you will be handling?
- How long will you be handling it?
- How much does it weigh?
- What is the outside texture of the item? (rough edges, smooth finish, etc...)

**990, FEATURES**

- 22 oz. Flextra® palm and back with 24 oz. Goldengard® cuff
- 14" Length
- Double wool lined in palm
- Sewn with Kevlar® thread
- Maximum temp. 600°F to 1000°F
- Size - XL

990 Also available in:  
990LL - Left hand only  
990RHO - Right hand only



**990 Glove**

*Cleft cut has no seams on palm, increase strength*

**879 FEATURES**

- Brown side split cowhide thermal leather
- Tanned to withstand premature hardening
- 14" Length
- Wool lined
- Maximum temp. 400°F
- Size - XL



**879**



## Spats and Leggings

### Spats and Legging Materials



528 CL



527

#### Leather –

Premium side split cowhide

#### Oak Tan Flare –

Covers the entire shoe or boot with thicker leather that has been specially tanned to be stiffer, making it more resistant to sparks and spatter

#### Aluminized Rayon –

Great heat reflector

#### Aluminized Carbon Kevlar® –

Most resistant material to heat, sparks and spatter



#### Side Bar

Aluminum bar runs length of legging and tucks into side to keep legging from dropping

Model	Length	Closure	MATERIAL			
			Leather	Oak Tan Flare	Aluminized Rayon	Aluminized Carbon Kevlar®
527	7"	Velcro®	527CL	527	527AR	527ACK
528	15"	Velcro® Top Slide Bar	528CL	528	528AR	528ACK

## Back-hand Pads

#### Standard Single Layer Protection



555

#### 555 FEATURES

- Aluminized Carbon Kevlar®
- Designed to protect back of hand and finger tips
- Single elastic strap
- 9 1/2" H" x 5 1/4" W"

#### Standard Single Layer Protection



550

#### 550 FEATURES

- Top: Aluminized Carbon Kevlar®
- Bottom: Weldflex® (combination Kevlar® and vermiculite coated fiberglass)
- Leather and elastic straps
- 7 1/2" H" x 5 3/4" W"

\* All back-hand pads sold in eaches

## Knee Pads & Rod Holder

### Knee Pads

562

Leather knee pad with heavy rubber insert



### Rod Holder

525

#### Cowhide Side Split Leather Rod Bag

- Reinforced bottom
- Spring clip
- Sewn with Kevlar®
- 14"H x 3 1/2"W



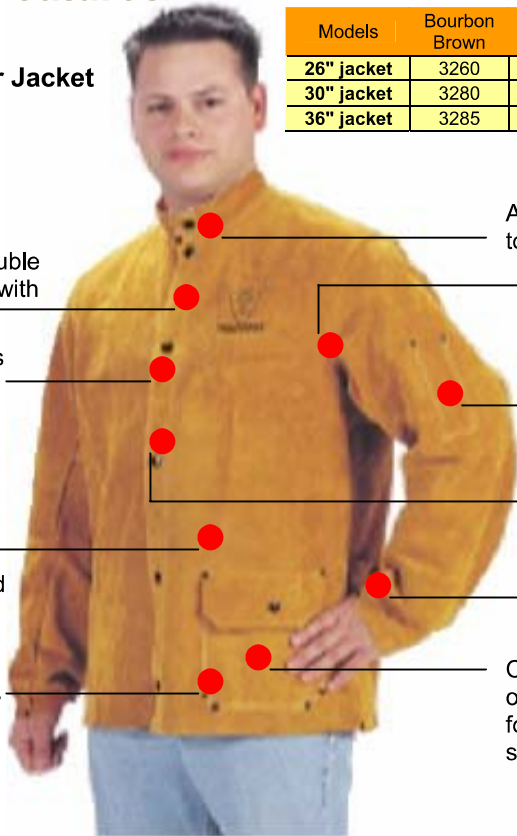


## Jackets, Cape Sleeves, Bibs

Tillman's import leather line is 100% inspected in the USA and offers exceptional quality and value.

### Leather Jacket Key Features

**3280**  
**30" Leather Jacket**



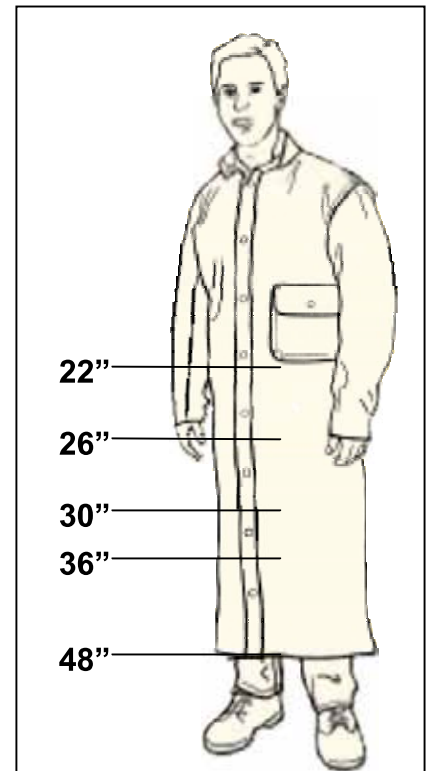
- All seams double lock stitched with Kevlar®
- All button snaps black anodized to prevent arc flashback
- Soft, pliable, durable side split leather, specially tanned for heat resistance
- All stress points rivet reinforced
- All hardware plated to prevent rust
- Underarm gusset allows for easier movement
- Soapstone pocket on each sleeve
- All button snaps leather reinforced
- Adjustable snaps at wrists and back
- Convenient outside pocket for small item storage

### Import Leather Jacket Models

Models	Bourbon Brown	Size
26" jacket	3260	S, M, L, XL, 2XL, 3XL
30" jacket	3280	S, M, L, XL, 2XL, 3XL, 4XL
36" jacket	3285	S, M, L, XL, 2XL, 3XL

## Jacket Length Chart

Tillman offers a wide range of jacket lengths from 22" to 48"



### Cape Sleeve and Bib Key Features

**3221 Cape Sleeve**



- All button snaps Black anodized to prevent arc flashback
- All hardware plated leather reinforced to prevent rust
- Adjustable snaps at wrist
- All seams double lock stitched with Kevlar®
- All stress points rivet reinforced
- Soapstone pocket on each sleeve
- All button snaps leather reinforced
- Soft, pliable, durable side split leather, specially tanned for heat resistance

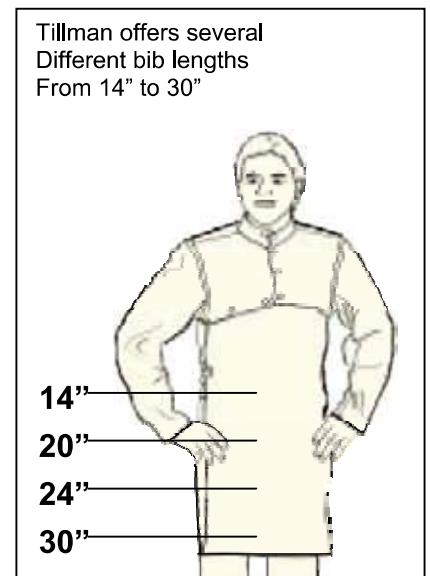
**3120**  
**20" Bib**

### Cape Sleeve and Bib Models

Models	Bourbon Brown
Cape Sleeve	3260
14" Bib	3280
20" Bib	3285
24" Bib	
Cape Sleeve + 14" Bib	3221-14
Cape Sleeve + 20" Bib	3221-20
Cape Sleeve Size	S, M, L, XL, 2XL, 3XL, 4XL

### Bib Length Chart

Tillman offers several Different bib lengths From 14" to 30"





## LEATHER APRONS

### Bench, Bib, Waist, Split-Leg, Chaps

#### DOMESTIC Bench Aprons

Proven designs and detailed craftsmanship make these aprons true classics



5320

#### 5320 FEATURES

- 24" x 28"
- Apron flares to 30" at bottom for greater protection
- Two chest pockets
- One waist D-ring



Adjustable crossed back straps

#### KEY BIB AND SPLIT LEG APRON FEATURES

- Made from premium USA side split cowhide specially treated for heat resistance
- Crossed back straps for comfort
- Durable molded side release buckles can be operated with gloves for easy on/off
- Two chest pockets
- Split leg aprons incorporate side release buckles down the legs

#### IMPORTS Waist Aprons

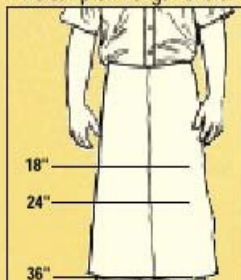


4124

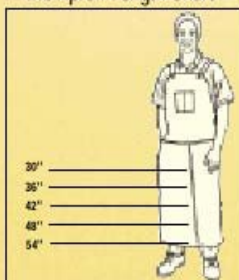
#### WAIST APRON FEATURES

- Made from premium side split cowhide
- Heavy duty waist strap secures apron comfortably
- Size - 4118 - 24" x 18"  
4124 - 24" x 24"  
4436 - 24" x 36"  
(split leg)  
4440 - 24" x 40"  
(split leg)

Waist Apron Length Chart



Bib Apron Length Chart



#### Split Leg Bib Apron



5300



#### 5300 FEATURES

- 24" x 54"
- Heavy duty crossed back straps for comfort
- Two chest pockets
- Double leather reinforced crotch
- One waist D-ring
- 5300ALS - All leather extension straps

#### Chaps



Unique double reinforced crotch design

5330

#### 5330 FEATURES

- 24" x 38" split leg waist apron (chaps)
- Double reinforced crotch
- Heavy duty adjustable waist strap
- Six leg straps
- 5330ALS - All leather extension straps

#### Bib Aprons



4242

#### SIZE

- 4230 - 24" x 30"
- 4236 - 24" x 36"
- 4242 - 24" x 42"
- 4248 - 24" x 48"

#### Split Leg Bib Apron



4342

#### SIZE

- 4336 - 24" x 36"
- 4342 - 24" x 42"
- 4348 - 24" x 48"

## LEATHER CLOTHING Sleeves, Overalls

Tillman's leather sleeves, overalls and helmet are designed to protect arms, legs and head, using specially tanned leathers for heat resistance.

### Leather Sleeves



5218

#### 5218, 5218E FEATURES

- Specially tanned side spilt cowhide
- Kevlar<sup>®</sup> sewn
- Protects above elbow down to wrist
- 5218 - snap closure at wrist, slide adjustment at top
- 5218E - 2 1/4" elastic at both ends



5218E



5200

#### 5200, 5200L FEATURES

- Made from premium side spilt cowhide
- Leather protects top of
- Adjustable leather neck straps

5200 - 23" length (pair)  
 5200L - 25" length (pair)  
 5200SR - 23" single right sleeve  
 5200SL - 23" single left sleeve  
 5200LL - 25" single left sleeve  
 5200LR - 25" single right sleeve



5000

### Leather Helmet

#### 5000 FEATURES

- Made from premium side spilt cowhide
- Designed to protect head and face
- Adjustable headgear
- Screen vents on top of helmet
- 2" x 4 1/4" lift

### Leather Pants and Overalls



5350

Leather Pants

Pants and Overalls  
 Cutome made here in the USA to exacting details and finish. For the welder that requires the best.

#### 5350 FEATURES

- Made from premium side spilt cowhide
- Leather belt loops
- Waist D-ring
- Fly with snap closures
- Leather hammer loop
- Rear pocket

Custom sizes -  
 please advise waist and in seam measurements



5400

Leather Bib Overalls

#### 5400 FEATURES

- Made from premium side spilt cowhide
- Waist D-ring
- Fly with snap closures
- Two Leather hammer loop
- Rear pocket

Custom sizes -  
 please advise waist and in seam measurements

All parts and overalls are custom made to size. If you wish to wear over clothing, please add appropriate additional inches.



# FRAME RETARDANT CLOTHING

## LIGHTWEIGHT PROTECTIVE CLOTHING

### Flame Retardant Cotton Jackets, Shop Coats

#### 9 oz. 30" Jackets

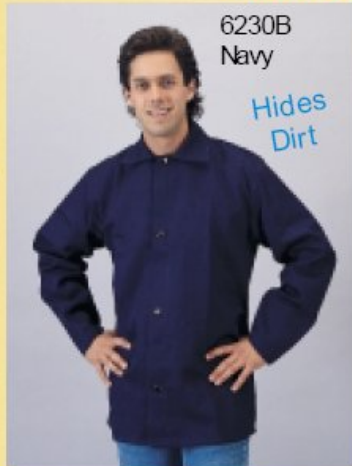


6230  
Green



6230V  
With Velcro®  
Closure

\*30" jackets feature inside pocket



6230B  
Navy  
Hides  
Dirt



6230R  
Red

#### Flame Retardant Cotton Materials

Tillman uses only USA made, Westex Proban® FR7A®, 100% cotton, flame retardant fabric. Proban® FR7A® is designed to self extinguish when exposed to flame or thermal ignition sources, and will not shrink, melt or drip molten residues. This treatment offers:

- Economical protection from sudden flame exposure, light molten splash and sparks
- It is cool, comfortable, and washable
- Maintains flame resistance for up to 50 home washings at 145°F or 25 commercial washings up to 165°F

Available in:

- 9 oz - Lightest weight, most popular
- 12 oz - Heavier weight, greater protection (see page 40)
- 14 oz - Our heaviest weight, has brushed interior for extra comfort (see page 40)



6230D  
Orange  
High Visibility  
Safety Orange

#### Why Use Westex Proban® FR7A® Fabric?

- USA made
- More than 50 years of experience with specialty cotton fabrics
- Continuous technical and laboratory testing provides superior quality
- Each fabric lot thoroughly examined to ensure consistency in weight and flammability standards

#### 9 oz. Shop Coats



6250  
50" Green

\*6250 includes inside pocket



6640B  
40" Navy



6640R  
40" Red

\*6640B, 6640R includes one outside chest pocket and two outside waist pockets

#### 9 oz. Flame Retardant Cotton Jacket Models

Part #	Color	Closure	Length	Size
6230	Green	Snap	30"	S, M, L, XL, 2XL, 3XL, 4XL, 5XL
6230V	Green	Velcro®	30"	S, M, L, XL, 2XL, 3XL
6230-36	Green	Snap	36"	S, M, L, XL, 2XL, 3XL
6232	Green	Snap	32" (Sleeves 22")	L, XL, 2XL, 3XL, 4XL
6250	Green	Snap	50"	S, M, L, XL, 2XL, 3XL
6230B	Navy	Snap	30"	S, M, L, XL, 2XL, 3XL
6640B	Navy	Snap	40"	M, L, XL, 2XL, 3XL
6230R	Red	Snap	30"	S, M, L, XL, 2XL, 3XL
6640R	Red	Snap	40"	M, L, XL, 2XL, 3XL
6230D	Orange	Snap	30"	S, M, L, XL, 2XL, 3XL, 4XL

## ALUMINIZED PROTECTIVE CLOTHING

### Jackets, Aprons, Sleeves, Pants, Leggings, Hoods

Tillman's aluminized clothing is designed for extreme heat applications.

Please contact Tillman with your requirements for a specific product recommendation.



#### Aluminized Material Key Features

##### Aluminized Leather (AL)

- Side split leather with aluminized layer bonded to one side
- Provides radiant heat and molten metal protection
- Used primarily in aprons and leggings

##### 16 oz. Aluminized Rayon (AR)

- Protects against radiant heat
- Lightweight
- Not recommended for molten metal

##### 19 oz. Aluminized Carbon Kevlar® (ACK)

- Protects against radiant heat and molten metal splash
- High temperature asbestos replacement

##### 13 oz. Aluminized Carbon Kevlar® (ACKT)

- Lightweight version of ACK

Item / Size	Aluminized Leather (AL)	Aluminized Rayon (AR)	Aluminized Carbon Kevlar® (ACK)	Aluminized Carbon Kevlar® (ACKT)
Hood with 7" x 11" clear window		7000	8000	8000T
Hood with 7" x 11" gold window		7006	8006	8006T
14" bib		7114	8114	8114T
20" bib		7120	8120	8120T
23" sleeves		7200	8200	8200T
18" sleeves		7218	8218	8218T
Cape sleeve		7221	8221	8221T
30" jacket		7230	8230	8230T
36" jacket		7236	8236	8236T
40" jacket		7240	8240	8240T
50" jacket		7250	8250	8250T
24" x 24" waist apron	4124AL	7324	8324	8324T
24" x 30" bib apron	4230AL	7430	8430	8430T
24" x 36" bib apron	4236AL	7436	8436	8436T
24" x 42" bib apron	4242AL	7442	8442	8442T
24" x 48" bib apron	4248AL	7448	8448	8448T
24" x 36" bib split leg apron	4336AL	7536	8536	8536T
24" x 42" bib split leg apron	4342AL	7542	8542	8542T
24" x 48" bib split leg apron	4348AL	7548	8548	8548T
24" x 36" split leg waist apron	4436AL	7636	8636	8636T
Chaps	4536AL	7656	8656	8656T
Pants	-	7700	8700	8700T
Coveralls	-	7900	8900	8900T
7" spats with Velcro® closure	527AL	527AR	527ACK	-
15" side bar leggings	528AL	528AR	528ACK	-
15" spring steel leggings	529AL	529AR	529ACK	-
14" leggings with Velcro® only	530AL	530AR	530ACK	-